



CABINETS

OPEN FRONT WITH FLAT TOP

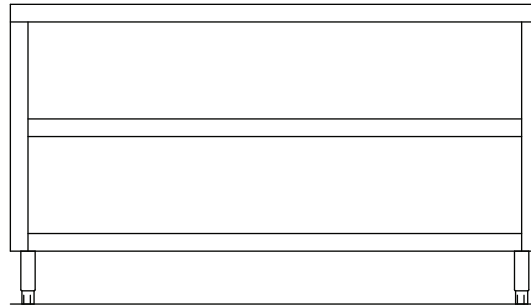
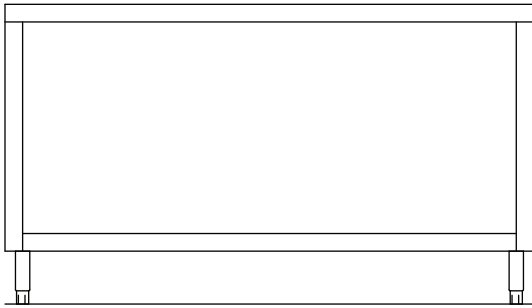


Item #:

Qty #:

Model #:

Project #:



CABINET FEATURES:

Choose from 24" or 30" widths, 4' to 12' lengths.

Uni-body design includes die formed rear and end panels. Welded to undershelves to achieve a rigid one-piece unit.

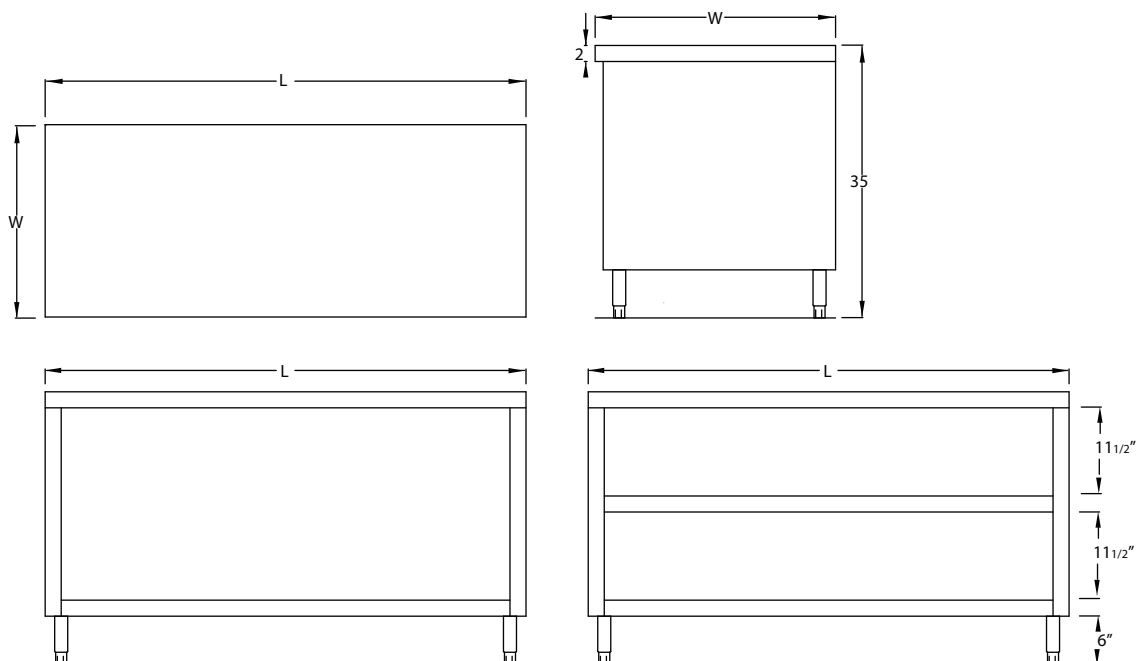
Top: 16 gauge type 304 stainless steel.

Body and Shelves: Type 430 stainless steel.

Legs: 6" high stainless steel with adjustable bullet feet.

WIDTH	LENGTH	MODEL	WT.	MODEL	WT.
24"	4 FT	RJ-CBT-244	85	RJ-CBT-M-244	100
	5 FT	RJ-CBT-245	110	RJ-CBT-M-245	125
	6 FT	RJ-CBT-246	135	RJ-CBT-M-246	150
	7 FT	RJ-CBT-247	160	RJ-CBT-M-247	175
	8 FT	RJ-CBT-248	185	RJ-CBT-M-248	200
	9 FT	RJ-CBT-249	210	RJ-CBT-M-249	225
	10 FT	RJ-CBT-2410	235	RJ-CBT-M-2410	250
	11 FT	RJ-CBT-2411	255	RJ-CBT-M-2411	275
	12 FT	RJ-CBT-2412	275	RJ-CBT-M-2412	300
30"	4 FT	RJ-CBT-304	95	RJ-CBT-M-304	110
	5 FT	RJ-CBT-305	120	RJ-CBT-M-305	135
	6 FT	RJ-CBT-306	145	RJ-CBT-M-306	160
	7 FT	RJ-CBT-307	170	RJ-CBT-M-307	185
	8 FT	RJ-CBT-308	195	RJ-CBT-M-308	210
	9 FT	RJ-CBT-309	220	RJ-CBT-M-309	235
	10 FT	RJ-CBT-3010	245	RJ-CBT-M-3010	260
	11 FT	RJ-CBT-3011	270	RJ-CBT-M-3011	285
	12 FT	RJ-CBT-3012	295	RJ-CBT-M-3012	325

DIMENSIONS & SPECIFICATIONS



DIMENSIONS ARE TYPICAL (TOL. +/- 1/2")

FLAT TOP W/O MIDSHELF			FLAT TOP W/MIDSHELF		
MODEL	W	L	MODEL	W	L
RJ-CBT-244	24"	4'	RJ-CBT-M-244	24"	4'
RJ-CBT-245	24"	5'	RJ-CBT-M-245	24"	5'
RJ-CBT-246	24"	6'	RJ-CBT-M-246	24"	6'
* RJ-CBT-247	24"	7'	* RJ-CBT-M-247	24"	7'
* RJ-CBT-248	24"	8'	* RJ-CBT-M-248	24"	8'
* RJ-CBT-249	24"	9'	* RJ-CBT-M-249	24"	9'
* RJ-CBT-2410	24"	10'	* RJ-CBT-M-2410	24"	10'
* RJ-CBT-2411	24"	11'	* RJ-CBT-M-2411	24"	11'
* RJ-CBT-2412	24"	12'	* RJ-CBT-M-2412	24"	12'
RJ-CBT-304	30"	4'	RJ-CBT-M-304	30"	4'
RJ-CBT-305	30"	5'	RJ-CBT-M-305	30"	5'
RJ-CBT-306	30"	6'	RJ-CBT-M-306	30"	6'
* RJ-CBT-307	30"	7'	* RJ-CBT-M-307	30"	7'
* RJ-CBT-308	30"	8'	* RJ-CBT-M-308	30"	8'
* RJ-CBT-309	30"	9'	* RJ-CBT-M-309	30"	9'
* RJ-CBT-3010	30"	10'	* RJ-CBT-M-3010	30"	10'
* RJ-CBT-3011	30"	11'	* RJ-CBT-M-3011	30"	11'
* RJ-CBT-3012	30"	12'	* RJ-CBT-M-3012	30"	12'

* All cabinets 84" or longer come standard with 6 legs.



CABINETS

SLIDING DOORS WITH FLAT TOP

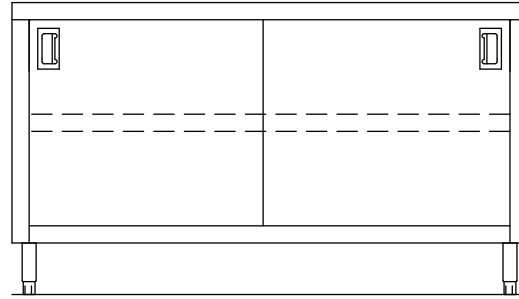
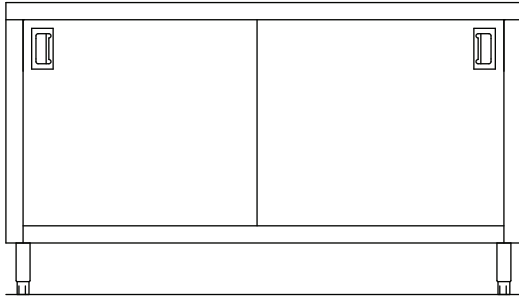


Item #:

Qty #:

Model #:

Project #:



CABINET FEATURES:

Choose from 24" or 30" widths, 4' to 12' lengths.

Uni-body design includes die formed rear and end panels. Welded to under-shelves to achieve a rigid one-piece unit.

Top: 16 gauge type 304 stainless steel.

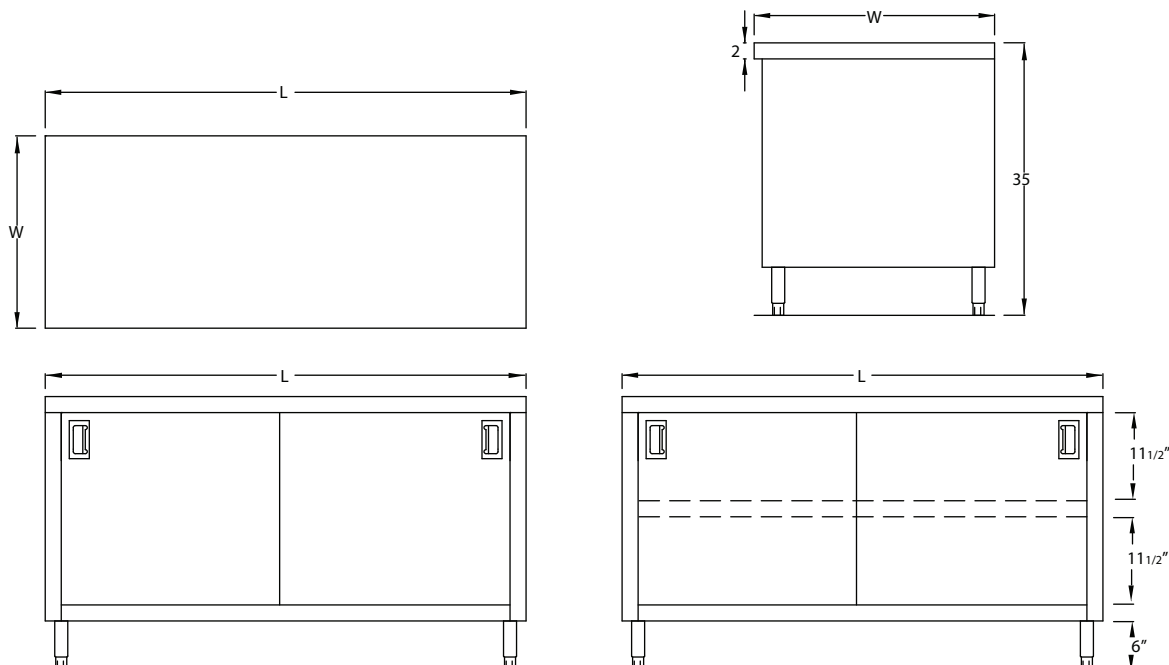
Body and Shelves: Type 430 stainless steel.

Legs: 6" high stainless steel with adjustable bullet feet.

Sliding Doors: Double panel for extra rigidity.

DIMENSIONS		FLAT TOP W/O MIDSHELF		FLAT TOP W/MIDSHELF	
WIDTH	LENGTH	MODEL	WT.	MODEL	WT.
24"	4 FT	RJ-CBT-S-244	110	RJ-CBT-M-S-244	120
	5 FT	RJ-CBT-S-245	140	RJ-CBT-M-S-245	150
	6 FT	RJ-CBT-S-246	170	RJ-CBT-M-S-246	180
	7 FT	RJ-CBT-S-247	200	RJ-CBT-M-S-247	210
	8 FT	RJ-CBT-S-248	230	RJ-CBT-M-S-248	240
	9 FT	RJ-CBT-S-249	260	RJ-CBT-M-S-249	270
	10 FT	RJ-CBT-S-2410	290	RJ-CBT-M-S-2410	300
	11 FT	RJ-CBT-S-2411	320	RJ-CBT-M-S-2411	330
	12 FT	RJ-CBT-S-2412	350	RJ-CBT-M-S-2412	380
30"	4 FT	RJ-CBT-S-304	115	RJ-CBT-M-S-304	125
	5 FT	RJ-CBT-S-305	145	RJ-CBT-M-S-305	155
	6 FT	RJ-CBT-S-306	175	RJ-CBT-M-S-306	185
	7 FT	RJ-CBT-S-307	205	RJ-CBT-M-S-307	215
	8 FT	RJ-CBT-S-308	235	RJ-CBT-M-S-308	245
	9 FT	RJ-CBT-S-309	265	RJ-CBT-M-S-309	275
	10 FT	RJ-CBT-S-3010	300	RJ-CBT-M-S-3010	305
	11 FT	RJ-CBT-S-3011	330	RJ-CBT-M-S-3011	345
	12 FT	RJ-CBT-S-3012	360	RJ-CBT-M-S-3012	380

DIMENSIONS & SPECIFICATIONS



DIMENSIONS ARE TYPICAL (TOL. +/- 1/2")

FLAT TOP W/O MIDSHELF				FLAT TOP W/MIDSHELF			
MODEL	W	L	DOORS	MODEL	W	L	DOORS
RJ-CBT-S-244	24"	4'	2	RJ-CBT-M-S-244	24"	4'	2
RJ-CBT-S-245	24"	5'	2	RJ-CBT-M-S-245	24"	5'	2
RJ-CBT-S-246	24"	6'	2	RJ-CBT-M-S-246	24"	6'	2
* RJ-CBT-S-247	24"	7'	4	* RJ-CBT-M-S-247	24"	7'	4
* RJ-CBT-S-248	24"	8'	4	* RJ-CBT-M-S-248	24"	8'	4
* RJ-CBT-S-249	24"	9'	4	* RJ-CBT-M-S-249	24"	9'	4
* RJ-CBT-S-2410	24"	10'	4	* RJ-CBT-M-S-2410	24"	10'	4
* RJ-CBT-S-2411	24"	11'	4	* RJ-CBT-M-S-2411	24"	11'	4
* RJ-CBT-S-2412	24"	12'	4	* RJ-CBT-M-S-2412	24"	12'	4
RJ-CBT-S-304	30"	4'	2	RJ-CBT-M-S-304	30"	4'	2
RJ-CBT-S-305	30"	5'	2	RJ-CBT-M-S-305	30"	5'	2
RJ-CBT-S-306	30"	6'	2	RJ-CBT-M-S-306	30"	6'	2
* RJ-CBT-S-307	30"	7'	4	* RJ-CBT-M-S-307	30"	7'	4
* RJ-CBT-S-308	30"	8'	4	* RJ-CBT-M-S-308	30"	8'	4
* RJ-CBT-S-309	30"	9'	4	* RJ-CBT-M-S-309	30"	9'	4
* RJ-CBT-S-3010	30"	10'	4	* RJ-CBT-M-S-3010	30"	10'	4
* RJ-CBT-S-3011	30"	11'	4	* RJ-CBT-M-S-3011	30"	11'	4
* RJ-CBT-S-3012	30"	12'	4	* RJ-CBT-M-S-3012	30"	12'	4

* All cabinets 84" or longer come standard with 6 legs.



CABINETS

HINGED DOORS WITH FLAT TOP

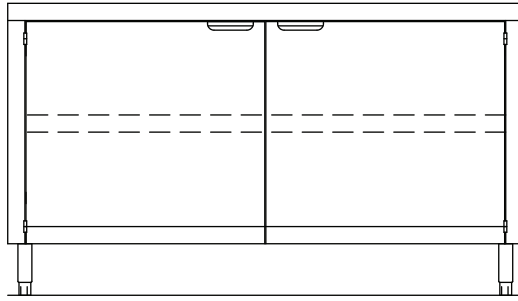
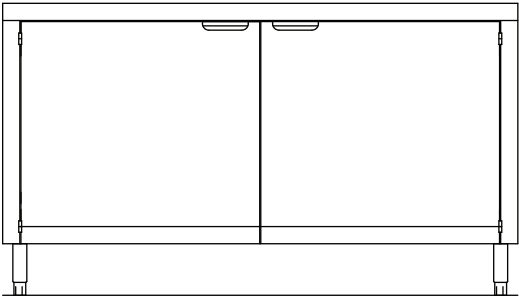


Item #:

Qty #:

Model #:

Project #:



CABINET FEATURES:

Choose from 24" or 30" widths, 4' to 12' lengths.

Uni-body design includes die formed rear and end panels. Welded to under-shelves to achieve a rigid one-piece unit.

Top: 16 gauge type 304 stainless steel.

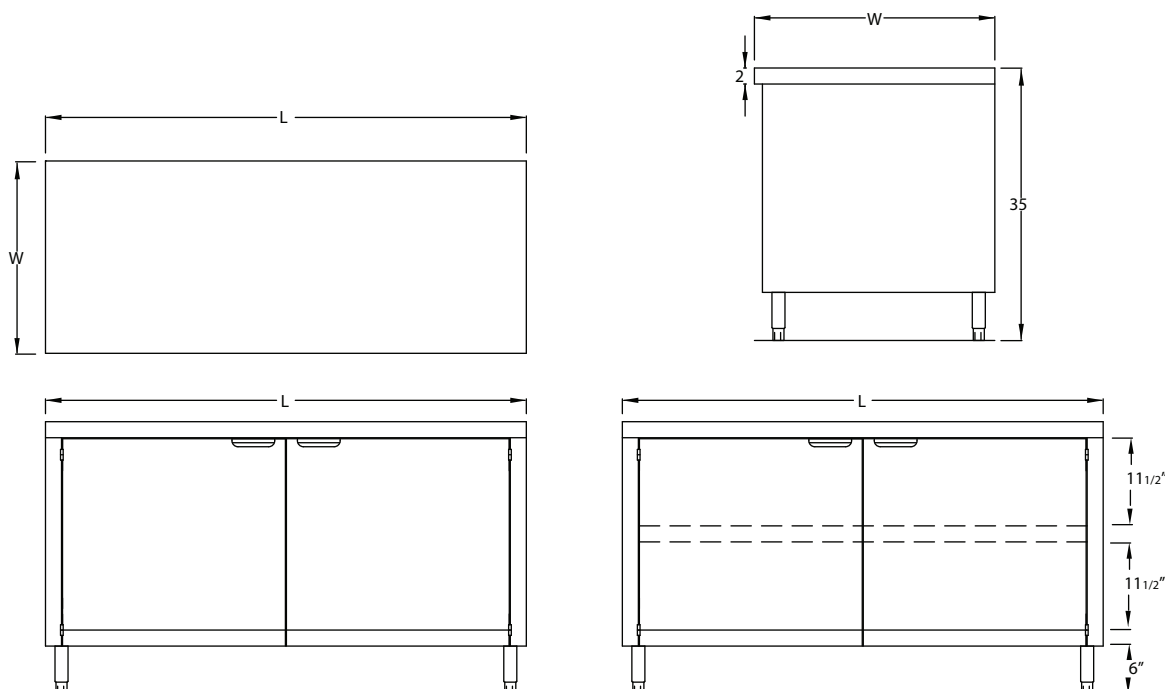
Body and Shelves: Type 430 stainless steel.

Legs: 6" high stainless steel with adjustable bullet feet.

Hinged Doors: Double panel for extra rigidity.

WIDTH	LENGTH	MODEL	WT.	MODEL	WT.
24"	4 FT	RJ-CBT-H-244	110	RJ-CBT-M-H-244	120
	5 FT	RJ-CBT-H-245	140	RJ-CBT-M-H-245	150
	6 FT	RJ-CBT-H-246	170	RJ-CBT-M-H-246	180
	7 FT	RJ-CBT-H-247	200	RJ-CBT-M-H-247	210
	8 FT	RJ-CBT-H-248	230	RJ-CBT-M-H-248	240
	9 FT	RJ-CBT-H-249	260	RJ-CBT-M-H-249	270
	10 FT	RJ-CBT-H-2410	290	RJ-CBT-M-H-2410	300
	11 FT	RJ-CBT-H-2411	320	RJ-CBT-M-H-2411	330
	12 FT	RJ-CBT-H-2412	350	RJ-CBT-M-H-2412	360
30"	4 FT	RJ-CBT-H-304	113	RJ-CBT-M-H-304	125
	5 FT	RJ-CBT-H-305	143	RJ-CBT-M-H-305	155
	6 FT	RJ-CBT-H-306	173	RJ-CBT-M-H-306	185
	7 FT	RJ-CBT-H-307	203	RJ-CBT-M-H-307	215
	8 FT	RJ-CBT-H-308	233	RJ-CBT-M-H-308	245
	9 FT	RJ-CBT-H-309	263	RJ-CBT-M-H-309	275
	10 FT	RJ-CBT-H-3010	298	RJ-CBT-M-H-3010	305
	11 FT	RJ-CBT-H-3011	330	RJ-CBT-M-H-3011	345
	12 FT	RJ-CBT-H-3012	360	RJ-CBT-M-H-3012	380

DIMENSIONS & SPECIFICATIONS



DIMENSIONS ARE TYPICAL (TOL. +/- 1/2")

MODEL	W	L	DOORS	MODEL	W	L	DOORS
RJ-CBT--244	24"	4'	2	RJ-CBT-M-H-244	24"	4'	2
RJ-CBT-H-245	24"	5'	2	RJ-CBT-M-H-245	24"	5'	2
RJ-CBT-H-246	24"	6'	3	RJ-CBT-M-H-246	24"	6'	3
* RJ-CBT-H-247	24"	7'	4	* RJ-CBT-M-H-247	24"	7'	4
* RJ-CBT-H-248	24"	8'	4	* RJ-CBT-M-H-248	24"	8'	4
* RJ-CBT-H-249	24"	9'	4	* RJ-CBT-M-H-249	24"	9'	4
* RJ-CBT-H-2410	24"	10'	4	* RJ-CBT-M-H-2410	24"	10'	4
* RJ-CBT-H-2411	24"	11'	6	* RJ-CBT-M-H-2411	24"	11'	6
* RJ-CBT-H-2412	24"	12'	6	* RJ-CBT-M-H-2412	24"	12'	6
RJ-CBT-H-304	30"	4'	2	RJ-CBT-M-H-304	30"	4'	2
RJ-CBT-H-305	30"	5'	2	RJ-CBT-M-H-305	30"	5'	2
RJ-CBT-H-306	30"	6'	3	RJ-CBT-M-H-306	30"	6'	3
* RJ-CBT-H-307	30"	7'	4	* RJ-CBT-M-H-307	30"	7'	4
* RJ-CBT-H-308	30"	8'	4	* RJ-CBT-M-H-308	30"	8'	4
* RJ-CBT-H-309	30"	9'	4	* RJ-CBT-M-H-309	30"	9'	4
* RJ-CBT-H-3010	30"	10'	4	* RJ-CBT-M-H-3010	30"	10'	4
* RJ-CBT-H-3011	30"	11'	6	* RJ-CBT-M-H-3011	30"	11'	6
* RJ-CBT-H-3012	30"	12'	6	* RJ-CBT-M-H-3012	30"	12'	6

* All cabinets 84" or longer come standard with 6 legs.



CABINETS

OPEN FRONT WITH 4" BACKSPLASH

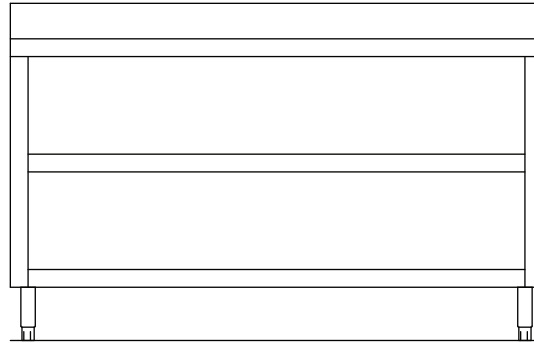
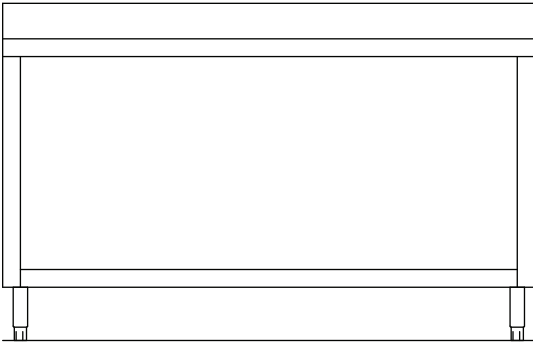


Item #:

Qty #:

Model #:

Project #:



CABINET FEATURES:

Choose from 24" or 30" widths, 4' to 12' lengths.

Uni-body design includes die formed rear and end panels. Welded to undershelves to achieve a rigid one-piece unit.

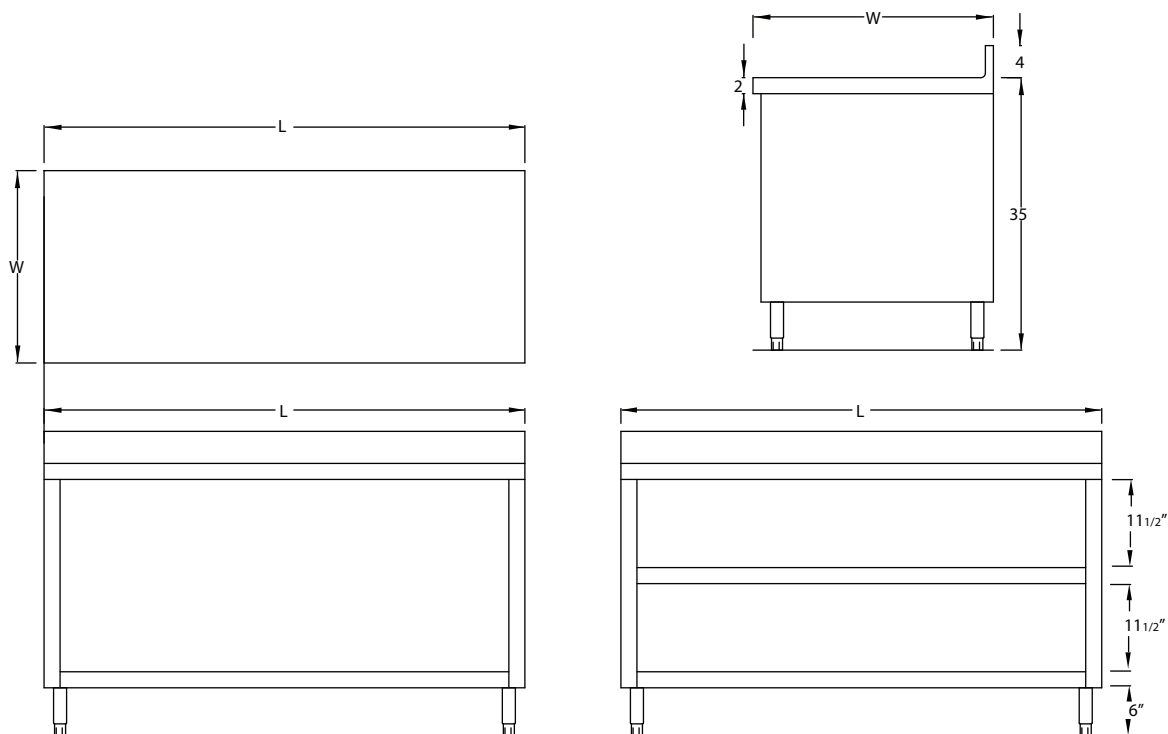
Top: 16 gauge type 304 stainless steel.

Body and Shelves: Type 430 stainless steel

Legs: 6" high stainless steel with adjustable bullet feet.

WIDTH	LENGTH	MODEL	WT.	MODEL	WT.
24"	4 FT	RJ-CBT-B-244	95	RJ-CBT-B-M-244	105
	5 FT	RJ-CBT-B-245	120	RJ-CBT-B-M-245	130
	6 FT	RJ-CBT-B-246	145	RJ-CBT-B-M-246	155
	7 FT	RJ-CBT-B-247	170	RJ-CBT-B-M-247	180
	8 FT	RJ-CBT-B-248	195	RJ-CBT-B-M-248	205
	9 FT	RJ-CBT-B-249	220	RJ-CBT-B-M-249	230
	10 FT	RJ-CBT-B-2410	245	RJ-CBT-B-M-2410	250
	11 FT	RJ-CBT-B-2411	270	RJ-CBT-B-M-2411	275
30"	12 FT	RJ-CBT-B-2412	295	RJ-CBT-B-M-2412	300
	4 FT	RJ-CBT-B-304	100	RJ-CBT-B-M-304	115
	5 FT	RJ-CBT-B-305	125	RJ-CBT-B-M-305	140
	6 FT	RJ-CBT-B-306	150	RJ-CBT-B-M-306	165
	7 FT	RJ-CBT-B-307	175	RJ-CBT-B-M-307	190
	8 FT	RJ-CBT-B-308	200	RJ-CBT-B-M-308	215
	9 FT	RJ-CBT-B-309	225	RJ-CBT-B-M-309	240
	10 FT	RJ-CBT-B-3010	250	RJ-CBT-B-M-3010	265
	11 FT	RJ-CBT-B-3011	275	RJ-CBT-B-M-3011	290
	12 FT	RJ-CBT-B-3012	300	RJ-CBT-B-M-3012	320

DIMENSIONS & SPECIFICATIONS



DIMENSIONS ARE TYPICAL (TOL. +/- 1/2")

4" BACKSPLASH W/O MIDSHELF			4" BACKSPLASH W/MIDSHELF		
MODEL	W	L	MODEL	W	L
RJ-CBT-B-244	24"	4'	RJ-CBT-B-M-244	24"	4'
RJ-CBT-B-245	24"	5'	RJ-CBT-B-M-245	24"	5'
RJ-CBT-B-246	24"	6'	RJ-CBT-B-M-246	24"	6'
* RJ-CBT-B-247	24"	7'	* RJ-CBT-B-M-247	24"	7'
* RJ-CBT-B-248	24"	8'	* RJ-CBT-B-M-248	24"	8'
* RJ-CBT-B-249	24"	9'	* RJ-CBT-B-M-249	24"	9'
* RJ-CBT-B-2410	24"	10'	* RJ-CBT-B-M-2410	24"	10'
* RJ-CBT-B-2411	24"	11'	* RJ-CBT-B-M-2411	24"	11'
* RJ-CBT-B-2412	24"	12'	* RJ-CBT-B-M-2412	24"	12'
RJ-CBT-B-304	30"	4'	RJ-CBT-B-M-304	30"	4'
RJ-CBT-B-305	30"	5'	RJ-CBT-B-M-305	30"	5'
RJ-CBT-B-306	30"	6'	RJ-CBT-B-M-306	30"	6'
* RJ-CBT-B-307	30"	7'	* RJ-CBT-B-M-307	30"	7'
* RJ-CBT-B-308	30"	8'	* RJ-CBT-B-M-308	30"	8'
* RJ-CBT-B-309	30"	9'	* RJ-CBT-B-M-309	30"	9'
* RJ-CBT-B-3010	30"	10'	* RJ-CBT-B-M-3010	30"	10'
* RJ-CBT-B-3011	30"	11'	* RJ-CBT-B-M-3011	30"	11'
* RJ-CBT-B-3012	30"	12'	* RJ-CBT-B-M-3012	30"	12'

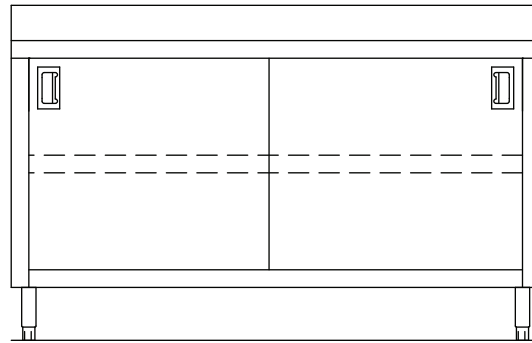
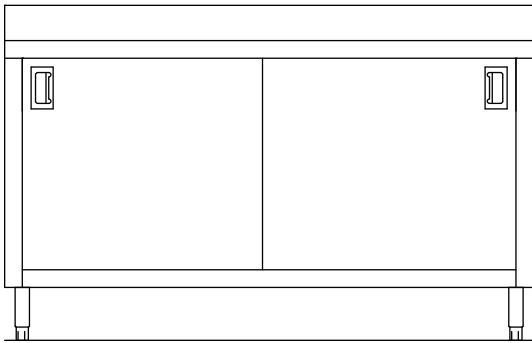
* All cabinets 84" or longer come standard with 6 legs.



CABINETS



SLIDING DOORS WITH 4" BACKSPLASH



Item #:

Qty #:

Model #:

Project #:

CABINET FEATURES:

Choose from 24" or 30" widths, 4' to 12' lengths.

Uni-body design includes die formed rear and end panels. Welded to under-shelves to achieve a rigid one-piece unit.

Top: 16 gauge type 304 stainless steel.

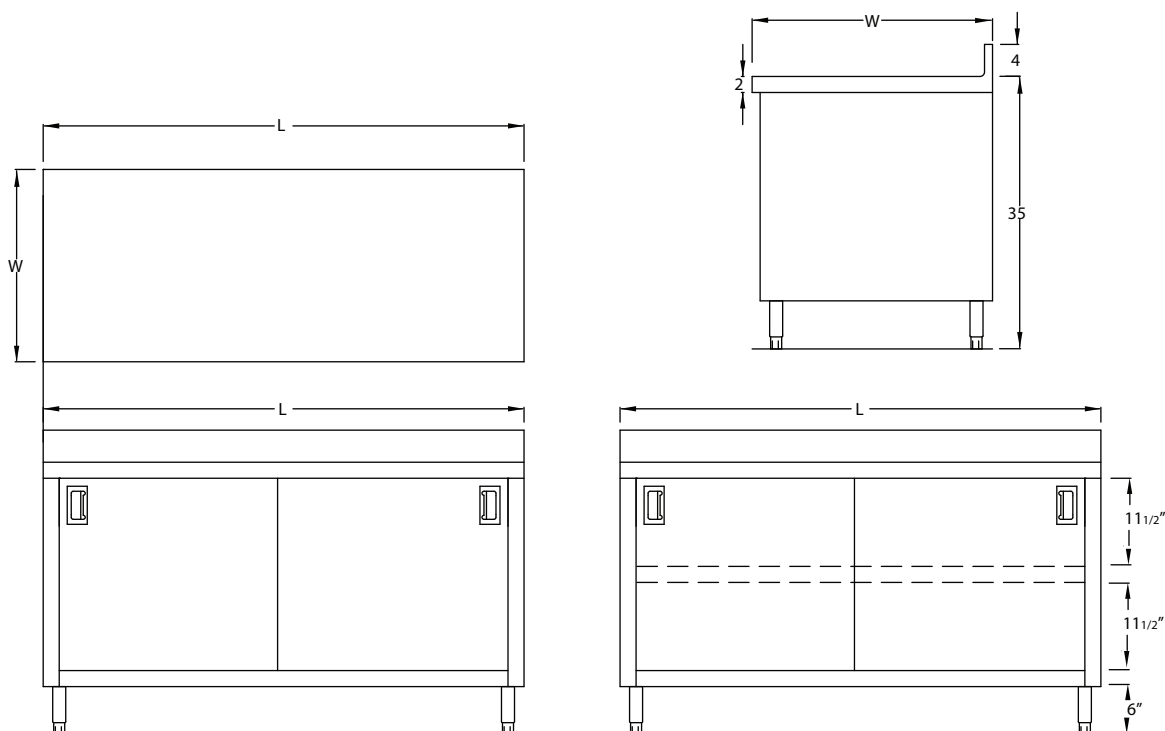
Body and Shelves: Type 430 stainless steel.

Legs: 6" high stainless steel with adjustable bullet feet.

Sliding Doors: Double panel for extra rigidity.

DIMENSIONS		4" BACKSPLASH W/O MIDSHELF		4" BACKSPLASH W/MIDSHELF	
WIDTH	LENGTH	MODEL	WT.	MODEL	WT.
24"	4 FT	RJ-CBT-B-S-244	110	RJ-CBT-B-M-S-244	125
	5 FT	RJ-CBT-B-S-245	140	RJ-CBT-B-M-S-245	155
	6 FT	RJ-CBT-B-S-246	170	RJ-CBT-B-M-S-246	185
	7 FT	RJ-CBT-B-S-247	200	RJ-CBT-B-M-S-247	215
	8 FT	RJ-CBT-B-S-248	230	RJ-CBT-B-M-S-248	245
	9 FT	RJ-CBT-B-S-249	260	RJ-CBT-B-M-S-249	275
	10 FT	RJ-CBT-B-S-2410	290	RJ-CBT-B-M-S-2410	315
	11 FT	RJ-CBT-B-S-2411	320	RJ-CBT-B-M-S-2411	345
	12 FT	RJ-CBT-B-S-2412	350	RJ-CBT-B-M-S-2412	385
30"	4 FT	RJ-CBT-B-S-304	115	RJ-CBT-B-M-S-304	140
	5 FT	RJ-CBT-B-S-305	145	RJ-CBT-B-M-S-305	170
	6 FT	RJ-CBT-B-S-306	175	RJ-CBT-B-M-S-306	200
	7 FT	RJ-CBT-B-S-307	205	RJ-CBT-B-M-S-307	230
	8 FT	RJ-CBT-B-S-308	235	RJ-CBT-B-M-S-308	260
	9 FT	RJ-CBT-B-S-309	270	RJ-CBT-B-M-S-309	290
	10 FT	RJ-CBT-B-S-3010	300	RJ-CBT-B-M-S-3010	320
	11 FT	RJ-CBT-B-S-3011	330	RJ-CBT-B-M-S-3011	350
	12 FT	RJ-CBT-B-S-3012	360	RJ-CBT-B-M-S-3012	380

DIMENSIONS & SPECIFICATIONS



DIMENSIONS ARE TYPICAL (TOL. +/- 1/2")

4" BACKSPLASH W/O MIDSHELF				4" BACKSPLASH W/MIDSHELF			
MODEL	W	L	DOORS	MODEL	W	L	DOORS
RJ-CBT-B-S-244	24"	4'	2	RJ-CBT-B-M-S-244	24"	4'	2
RJ-CBT-B-S-245	24"	5'	2	RJ-CBT-B-M-S-245	24"	5'	2
RJ-CBT-B-S-246	24"	6'	2	RJ-CBT-B-M-S-246	24"	6'	2
* RJ-CBT-B-S-247	24"	7'	4	* RJ-CBT-B-M-S-247	24"	7'	4
* RJ-CBT-B-S-248	24"	8'	4	* RJ-CBT-B-M-S-248	24"	8'	4
* RJ-CBT-B-S-249	24"	9'	4	* RJ-CBT-B-M-S-249	24"	9'	4
* RJ-CBT-B-S-2410	24"	10'	4	* RJ-CBT-B-M-S-2410	24"	10'	4
* RJ-CBT-B-S-2411	24"	11'	4	* RJ-CBT-B-M-S-2411	24"	11'	4
* RJ-CBT-B-S-2412	24"	12'	4	* RJ-CBT-B-M-S-2412	24"	12'	4
RJ-CBT-B-S-304	30"	4'	2	RJ-CBT-B-M-S-304	30"	4'	2
RJ-CBT-B-S-305	30"	5'	2	RJ-CBT-B-M-S-305	30"	5'	2
RJ-CBT-B-S-306	30"	6'	2	RJ-CBT-B-M-S-306	30"	6'	2
* RJ-CBT-B-S-307	30"	7'	4	* RJ-CBT-B-M-S-307	30"	7'	4
* RJ-CBT-B-S-308	30"	8'	4	* RJ-CBT-B-M-S-308	30"	8'	4
* RJ-CBT-B-S-309	30"	9'	4	* RJ-CBT-B-M-S-309	30"	9'	4
* RJ-CBT-B-S-3010	30"	10'	4	* RJ-CBT-B-M-S-3010	30"	10'	4
* RJ-CBT-B-S-3011	30"	11'	4	* RJ-CBT-B-M-S-3011	30"	11'	4
* RJ-CBT-B-S-3012	30"	12'	4	* RJ-CBT-B-M-S-3012	30"	12'	4

* All cabinets 84" or longer come standard with 6 legs.



CABINETS

HINGED DOORS WITH 4" BACKSPLASH

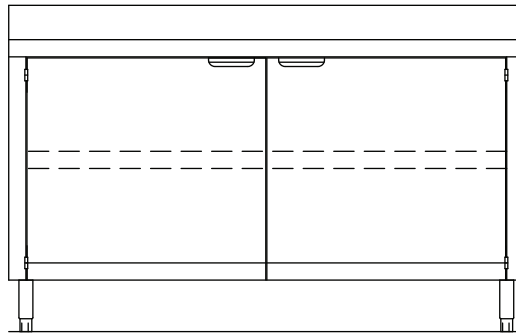
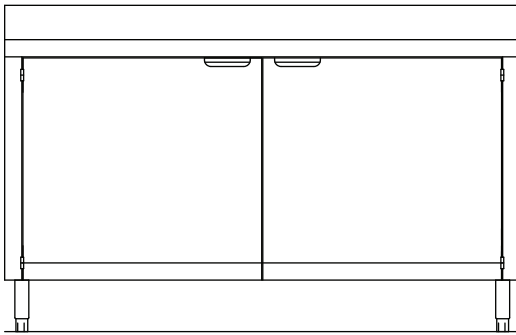


Item #:

Qty #:

Model #:

Project #:



CABINET FEATURES:

Choose from 24" or 30" widths, 4' to 12' lengths.

Uni-body design includes die formed rear and end panels. Welded to under-shelves to achieve a rigid one-piece unit.

Top: 16 gauge type 304 stainless steel.

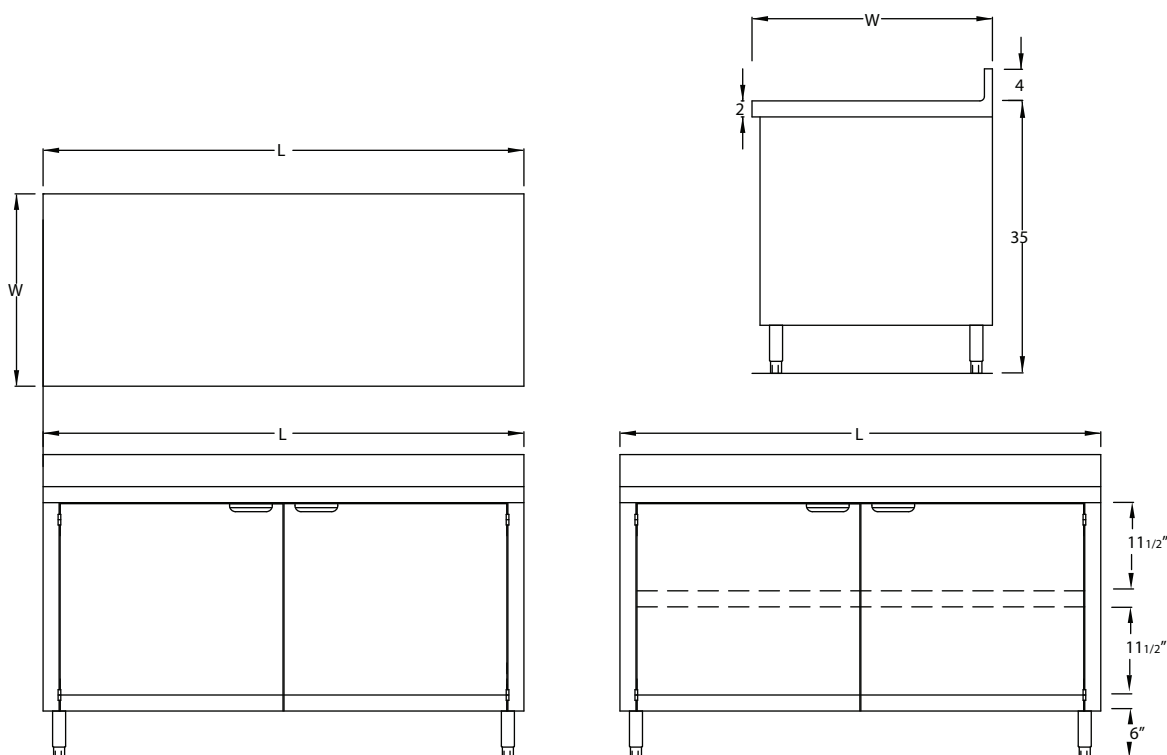
Body and Shelves: Type 430 stainless steel.

Legs: 6" high stainless steel with adjustable bullet feet.

Hinged Doors: Double panel for extra rigidity.

WIDTH	LENGTH	MODEL	WT.	MODEL	WT.
24"	4 FT	RJ-CBT-B-H-244	110	RJ-CBT-B-M-H-244	125
	5 FT	RJ-CBT-B-H-245	140	RJ-CBT-B-M-H-245	155
	6 FT	RJ-CBT-B-H-246	170	RJ-CBT-B-M-H-246	185
	7 FT	RJ-CBT-B-H-247	200	RJ-CBT-B-M-H-247	215
	8 FT	RJ-CBT-B-H-248	230	RJ-CBT-B-M-H-248	245
	9 FT	RJ-CBT-B-H-249	260	RJ-CBT-B-M-H-249	275
	10 FT	RJ-CBT-B-H-2410	290	RJ-CBT-B-M-H-2410	315
	11 FT	RJ-CBT-B-H-2411	320	RJ-CBT-B-M-H-2411	345
	12 FT	RJ-CBT-B-H-2412	350	RJ-CBT-B-M-H-2412	385
30"	4 FT	RJ-CBT-H-S-304	113	RJ-CBT-B-M-H-304	140
	5 FT	RJ-CBT-H-S-305	143	RJ-CBT-B-M-H-305	170
	6 FT	RJ-CBT-H-S-306	173	RJ-CBT-B-M-H-306	200
	7 FT	RJ-CBT-H-S-307	203	RJ-CBT-B-M-H-307	230
	8 FT	RJ-CBT-H-S-308	233	RJ-CBT-B-M-H-308	260
	9 FT	RJ-CBT-H-S-309	263	RJ-CBT-B-M-H-309	290
	10 FT	RJ-CBT-H-S-3010	298	RJ-CBT-B-M-H-3010	320
	11 FT	RJ-CBT-H-S-3011	330	RJ-CBT-B-M-H-3011	350
	12 FT	RJ-CBT-H-S-3012	360	RJ-CBT-B-M-H-3012	380

DIMENSIONS & SPECIFICATIONS



DIMENSIONS ARE TYPICAL (TOL. +/- 1/2")

MODEL	W	L	DOORS	MODEL	W	L	DOORS
RJ-CBT-B-H-244	24"	4'	2	RJ-CBT-B-M-H-244	24"	4'	2
RJ-CBT-B-H-245	24"	5'	2	RJ-CBT-B-M-H-245	24"	5'	2
RJ-CBT-B-H-246	24"	6'	2	RJ-CBT-B-M-H-246	24"	6'	2
* RJ-CBT-B-H-247	24"	7'	4	* RJ-CBT-B-M-H-247	24"	7'	4
* RJ-CBT-B-H-248	24"	8'	4	* RJ-CBT-B-M-H-248	24"	8'	4
* RJ-CBT-B-H-249	24"	9'	4	* RJ-CBT-B-M-H-249	24"	9'	4
* RJ-CBT-B-H-2410	24"	10'	4	* RJ-CBT-B-M-H-2410	24"	10'	4
* RJ-CBT-B-H-2411	24"	11'	4	* RJ-CBT-B-M-H-2411	24"	11'	4
* RJ-CBT-B-H-2412	24"	12'	4	* RJ-CBT-B-M-H-2412	24"	12'	4
RJ-CBT-B-H-304	30"	4'	2	RJ-CBT-B-M-H-304	30"	4'	2
RJ-CBT-B-H-305	30"	5'	2	RJ-CBT-B-M-H-305	30"	5'	2
RJ-CBT-B-H-306	30"	6'	2	RJ-CBT-B-M-H-306	30"	6'	2
* RJ-CBT-B-H-307	30"	7'	4	* RJ-CBT-B-M-H-307	30"	7'	4
* RJ-CBT-B-H-308	30"	8'	4	* RJ-CBT-B-M-H-308	30"	8'	4
* RJ-CBT-B-H-309	30"	9'	4	* RJ-CBT-B-M-H-309	30"	9'	4
* RJ-CBT-B-H-3010	30"	10'	4	* RJ-CBT-B-M-H-3010	30"	10'	4
* RJ-CBT-B-H-3011	30"	11'	4	* RJ-CBT-B-M-H-3011	30"	11'	4
* RJ-CBT-B-H-3012	30"	12'	4	* RJ-CBT-B-M-H-3012	30"	12'	4

* All cabinets 84" or longer come standard with 6 legs.